

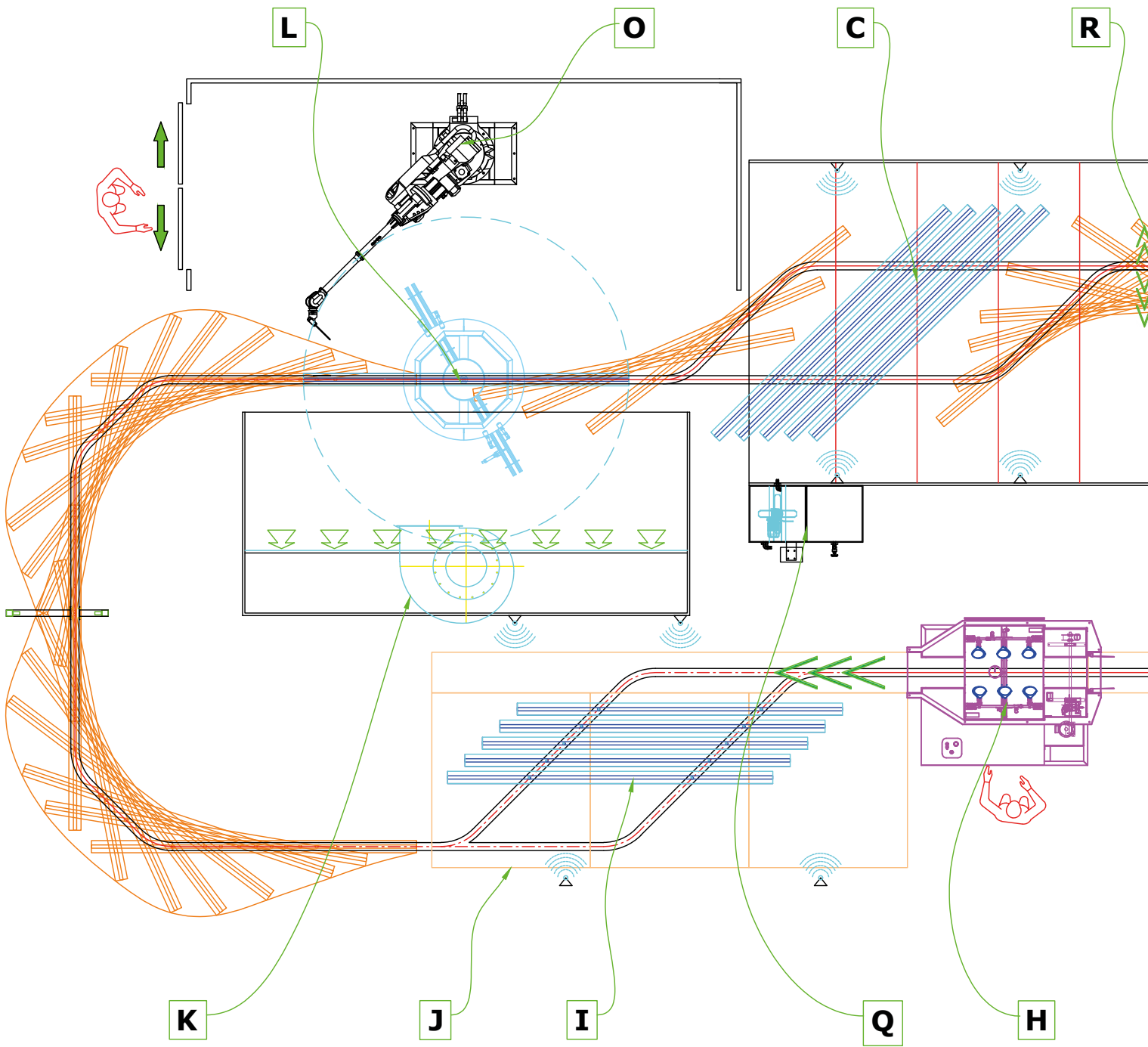


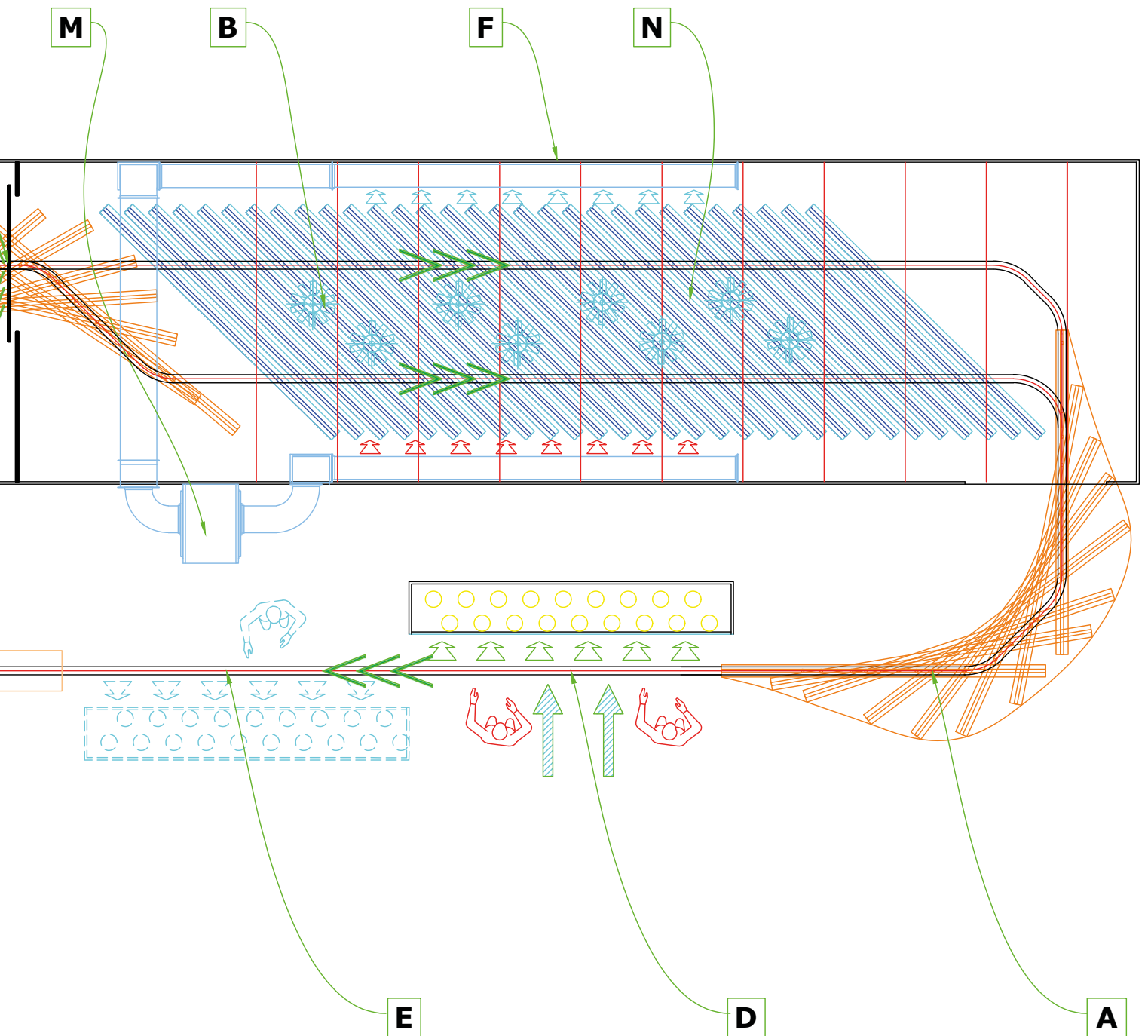
# TRASPORTATORE AEREO Mod. "CARGO"



AUTOMATIC CONVEYOR Mod. "CARGO"

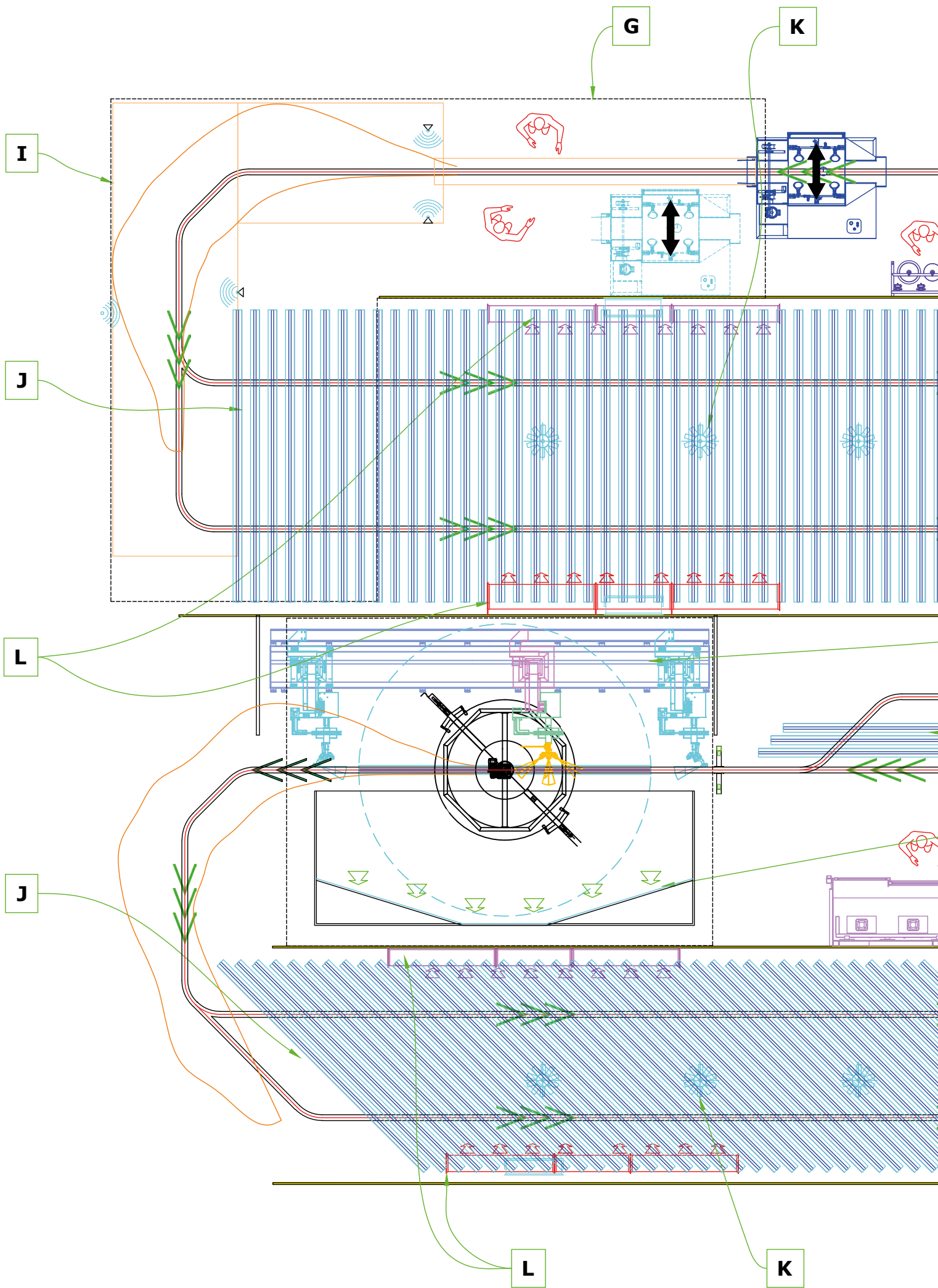


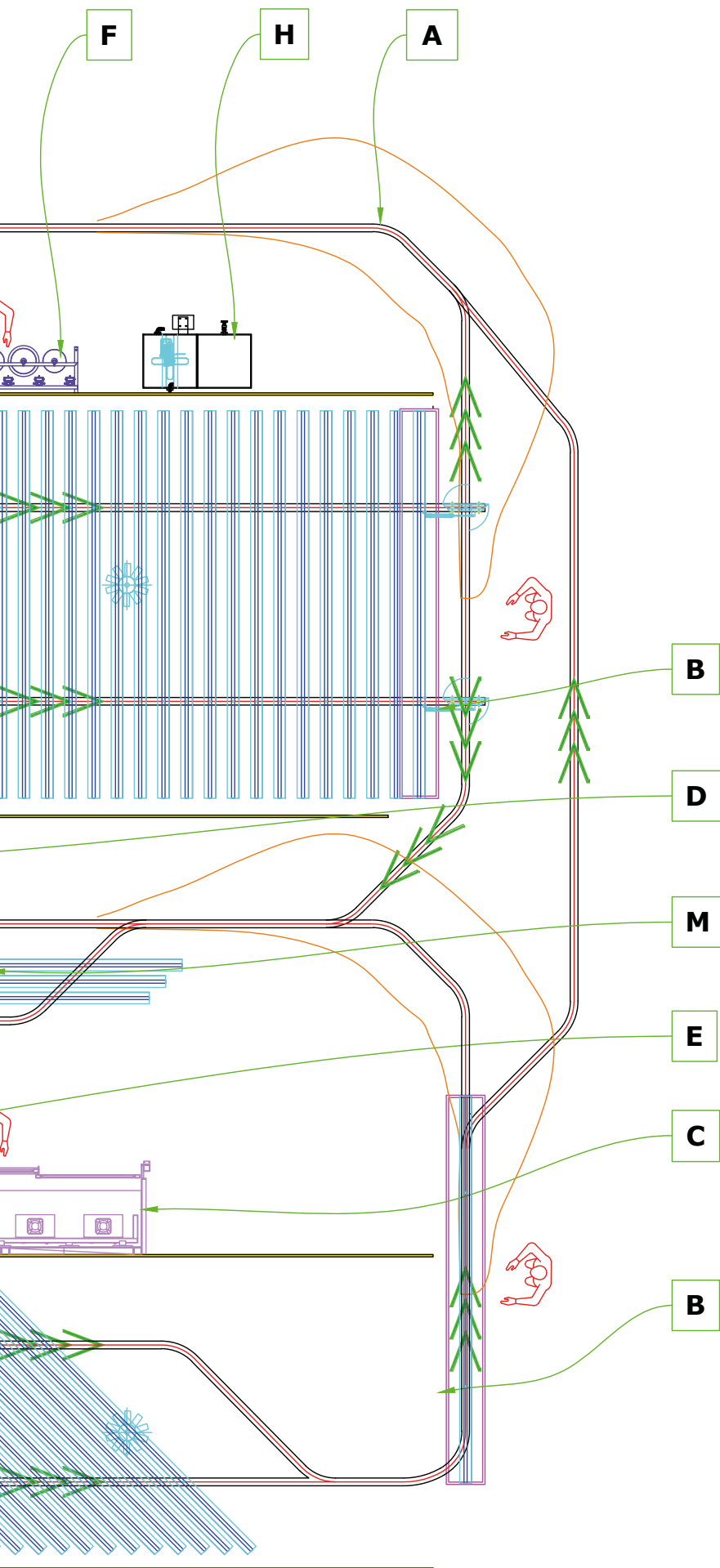




## LEGEND

- |   |  |
|---|--|
| A. OVERHEAD CONVEYOR OF PIECES HOLDER           | J. DRIP FOR IMPREGNATION RECOVERY                                |
| B. BARS WAREHOUSE                               | K. DRY SPRAY BOOTH   |
| C. HUMIDIFICATION AREA                          | L. AUTOMATIC ROTATION OF BAR                                     |
| D. LOADING/UNLOADING AND SANDING AREA WITH LIFT | M. AIR HEATING SYSTEM  |
| E. SANDING AREA WITH LIFT (OPTIONAL)            | N. DESTRATIFIERS   |
| F. DELIMITATION FOR DRYING AREA                 | O. ROBOT FOR PAINTING (OPTIONAL)                                 |
| G. DELIMITATION OF PAINTING AREA (OPTIONAL)     | P. AIR INLET IN PAINTING AREA FOR DEPRESSURE (OPTIONAL)          |
| H. FLOW-COATING MOD. POLISMAIL                  | Q. WATER CLARIFIER   |
| I. BAR BUFFER AFTER FLOWCOATING                 | R. SLIDING DOOR TO SEPARATE DRYING AREA FROM HUMIDIFICATION AREA |





## LEGEND

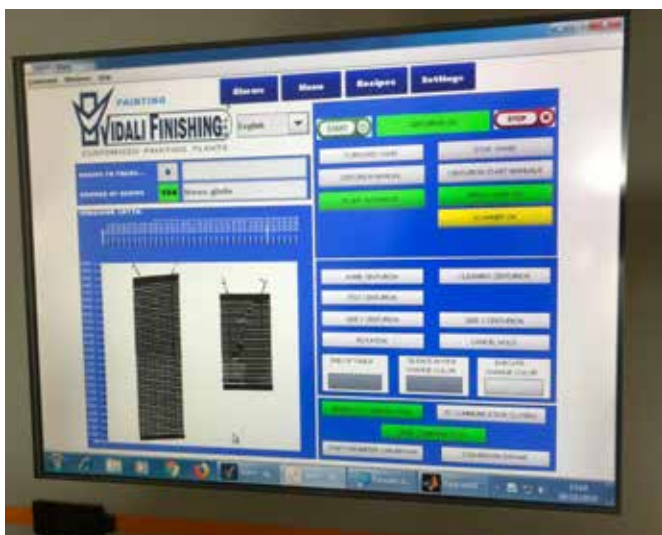
- A. OVERHEAD CONVEYOR OF PIECES HOLDER
- B. LIFT TO LOAD AND UPLOAD THE PIECES
- C. AUTOMATIC CHANGE COLOR SYSTEM FOR ROBOT
- D. ROBOT FOR AUTOMATIC PAINTING MOD. "CENTURION\_I"
- E. DRY PAINTING BOOTH
- F. AUTOMATIC CHANGE OF COLOR FOR FLOW-COATING
- G. IMPREGNATION AREA WITH FLOW-COATING
- H. CLARIFIER
- I. HUMIDIFICATION AREA
- J. DRYING TUNNEL
- K. DESTRATIFICATORS
- L. PLENUM FOR HOT AIR
- M. BUFFER PRE PAINTING ZONE



Ascensore per il carico scarico pezzi  
Lift for load and download pieces



Magazzino di accumulo barre  
Bars storage



Quadro elettrico di comando  
Electric control panel



Rotazione automatica delle barre  
Automatic rotation of the bars



Impregnazione con Flow coating Mod. Polismall Five  
Impregnation with Flow coating Polismall Five



Verniciatura automatica con robots  
Automatic painting with robots



Verniciatrice automatica GIVI 3000  
Automatic coater GIVI 3000



Carteggiatura serramenti in verticale  
Windows sanding in vertical



**Vidali Finishing s.r.l.**

Zona industriale Nord - Via dei Rori, 9

31045 Motta di Livenza - Treviso - ITALY

Tel: +39 0422 860212

Fax: +39 0422 861257

E-mail: [info@vidalifinishing.com](mailto:info@vidalifinishing.com)

[www.vidalifinishing.com](http://www.vidalifinishing.com)

Follow us:

